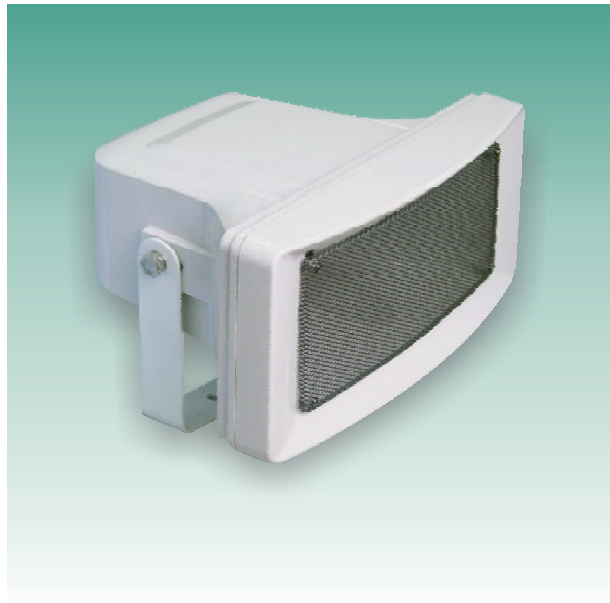




80710822 OMNITRONIC HS-50 Druckkammerlautsprecher

- Schwenkbarer Lautsprecher
- Hoher Schalldruck und breiter Übertragungsbereich
- 5" Konuslautsprecher für ausgewogenen Klang
- Im wetterfesten Kunststoffgehäuse
- 100 V Trafo
- Für Beschallungsanlagen im Außenbereich wie z. B. Sportplätze, Schwimmbäder, Open Air-Veranstaltungen

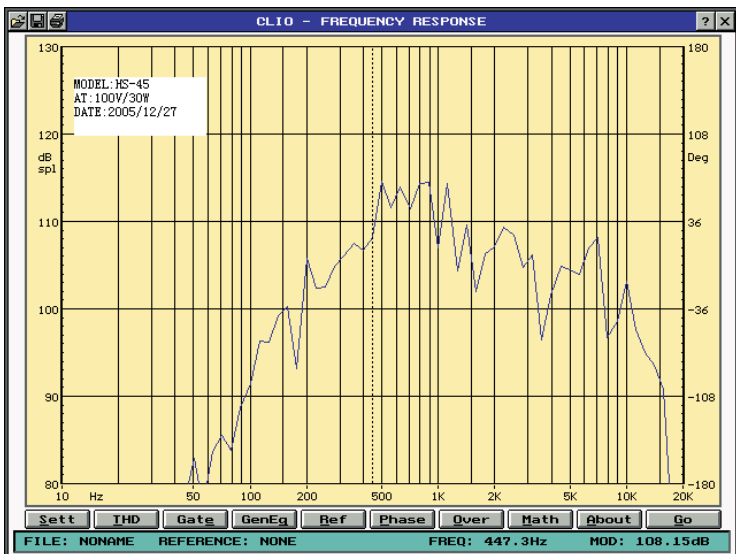
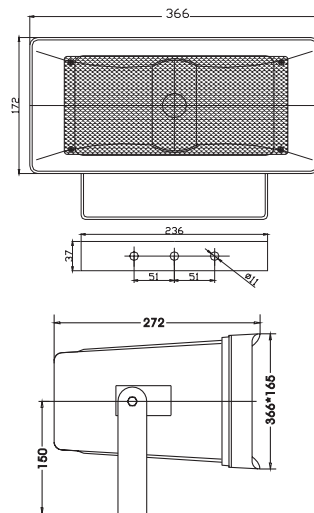
Eingangsspannung:	100 V
Lautsprecher:	5"
Nennleistung Transformator:	15/30 W RMS
Nennleistung Lautsprecher:	15/30 W RMS
Empfindlichkeit:	90 dB, ±3 dB (1 W, 1 m)
Max. Schalldruck:	105 dB (1 m)
Impedanz:	8 Ohm
Frequenzbereich:	100 Hz - 10 kHz
Maße (H x B x T):	366 x 165 x 272 mm
Gewicht:	3 kg



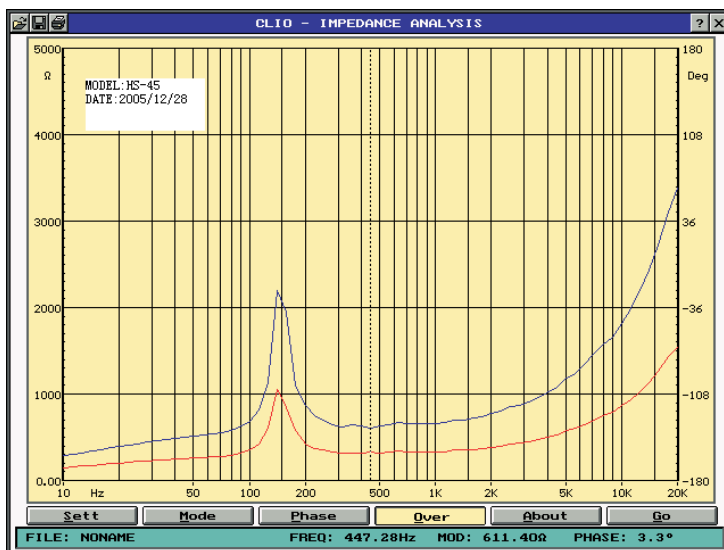
80710822 OMNITRONIC HS-50 pa horn speaker

- Swivable loudspeaker
- High sound pressure and wide frequency range
- 5" conical speaker for well-balanced sound
- In weather-proof plastic housing
- 100 V transformer
- For outdoor amplifying systems in football stadiums, outdoor pools, open air events

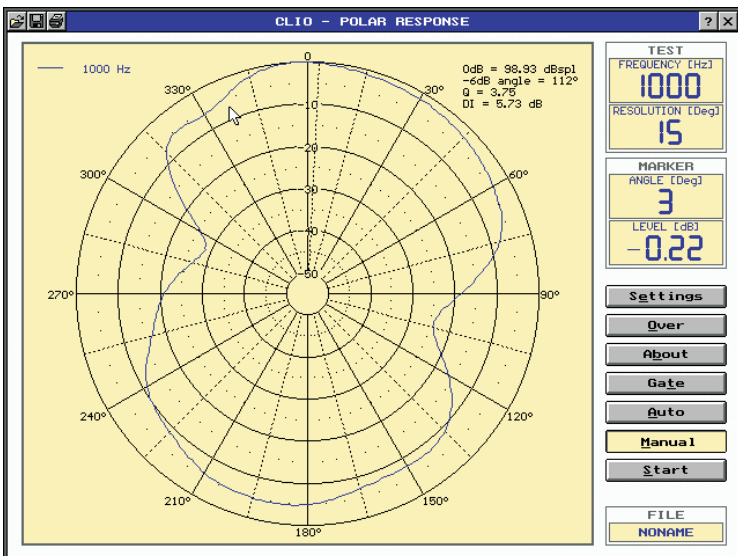
Input Voltage:	100 V
Speakers:	5"
Rated power transformer:	15/30 W RMS
Rated power speaker:	15/30 W RMS
Sensitivity (1 W/m):	90 dB, ±3 dB
Max. SPL (1 m):	105 dB
Impedance:	8 Ohms
Frequency range:	100 Hz - 10 kHz
Dimensions (H x W x D):	366 x 165 x 272 mm
Weight:	3 kg



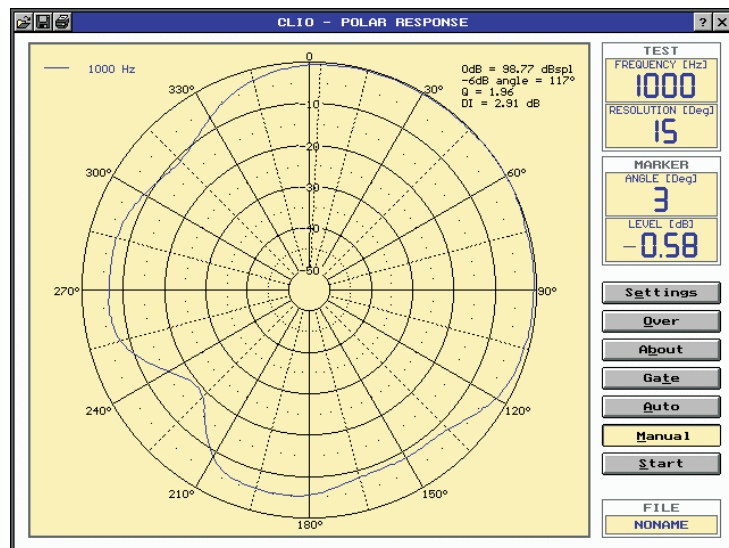
Horizontal:



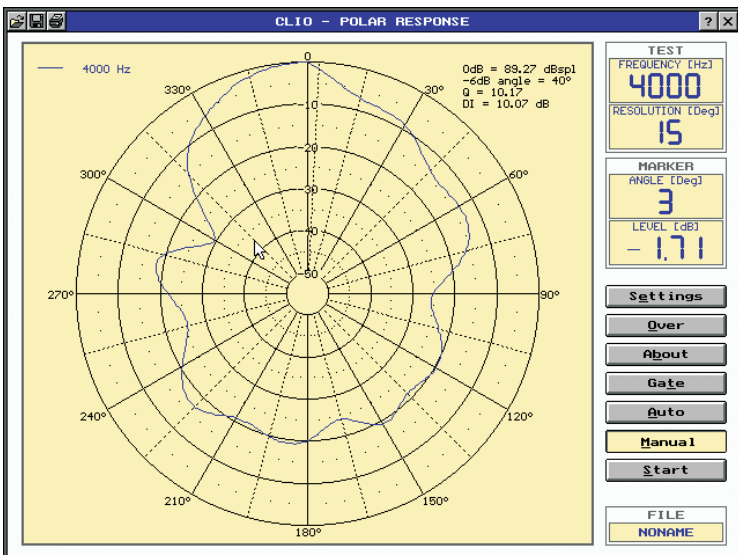
Vertical:



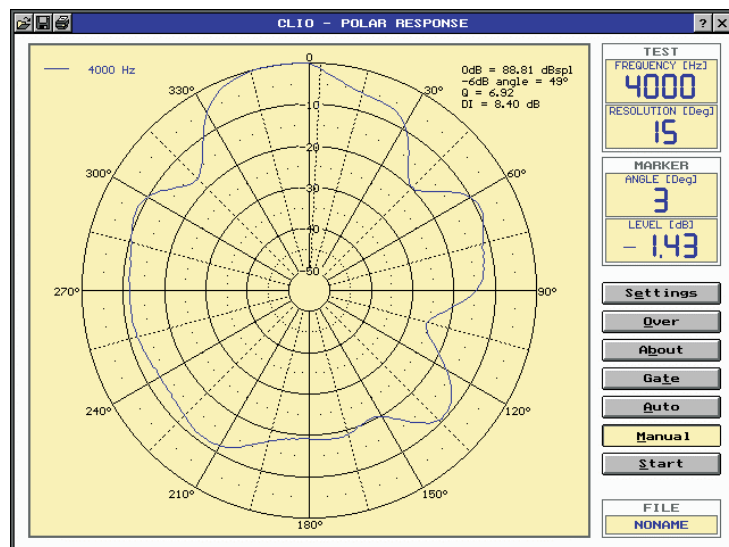
1000Hz



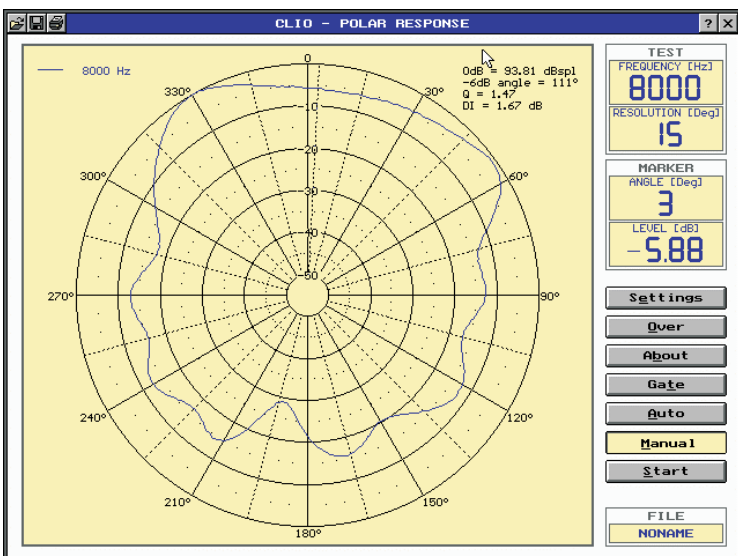
1000Hz (V)



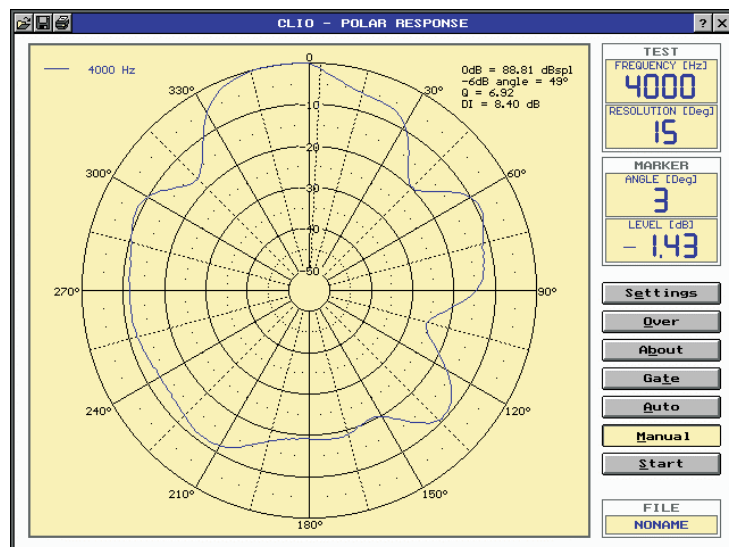
4000Hz



4000Hz



8000Hz



8000Hz