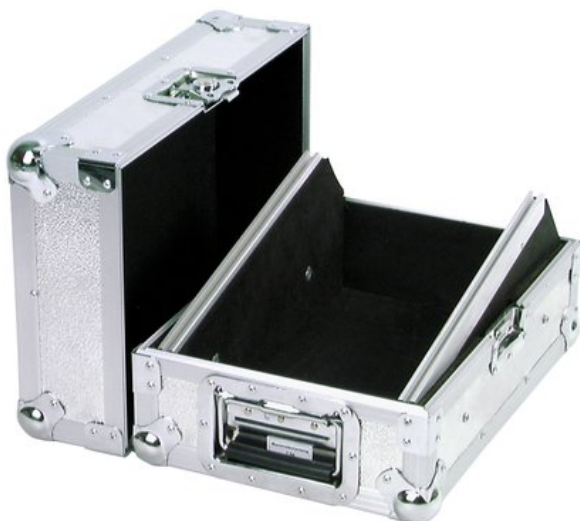


## ROADINGER Mixer case Road MCR-10 sloping, alu

PRO flightcase for 254 mm devices (10")

Art. No.: 30111514

GTIN: 4026397199475



**The article is no longer in our assortment.**

### Features:

- Suitable for 254 mm mixers (10") up to 8 U
- Upward tilted profile rails for top-operated units
- Interior upholstered with foam (black)
- High-quality workmanship with plywood multilayered glued, aluminum-colored laminated
- Aluminum profile frames (25 mm) with rounded edges
- Removable cover
- Three-leg, medium-sized steel ball corners
- 2 high-quality lockable butterfly locks,
- 4 rubber feet
- Padded carrying handle
- Delivery includes mounting screws
- With profile rails suitable for 10" units
- For further information about this product, please refer to the Data Sheet under "Downloads"

### Logistic

EAN / GTIN: 4026397199475

Weight: 6,85 kg

Length: 0.35 m

Width: 0.24 m

Height: 0.48 m

### Technical specifications:

Maximum load:	8 kg
Material thickness:	7 mm
Front panel width:	10"
Mounting height:	Approx. 35.5 cm (8 U)
Mounting depth:	110 mm
Weight:	6,20 kg

Strength:	7 mm
Outside dimensions (W x D x H):	330 x 440 x 220 mm
Inside dimensions:	
Mounting width:	max. 275 mm for 10" devices
Mounting height:	360 mm, 8 HE
Mounting depth:	min. 110 mm
Outer dimensions/corners:	55 mm