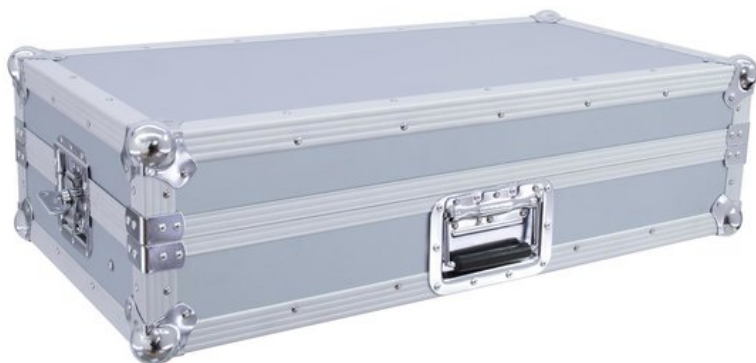


## ROADINGER Mixer case Pro MCB-27, sloping, alu 7U

PRO flightcase for 686 mm devices (27")

Art. No.: 30111557

GTIN: 4026397307467



**The article is no longer in our assortment.**

### Features:

- Suitable for 686 mm units (27"), e.g. controllers and mixers, with 7 U
- Upward tilted profile rails for top-operated units
- Interior upholstered with foam (black)
- High-quality workmanship with plywood multilayered glued, aluminum-colored laminated
- Aluminum profile frames (25 mm) with rounded edges
- Removable cover
- Three-leg, medium-sized steel ball corners
- 2 high-quality lockable butterfly locks
- 4 steel-enforced rubber feet
- Padded carrying handle
- Screws, rack nuts and washers included (18 pieces each)
- With profile rails suitable for 27" units
- For further information about this product, please refer to the Data Sheet under "Downloads"

### Logistic

EAN / GTIN: 4026397307467

Weight: 9,60 kg

Length: 0.80 m

Width: 0.25 m

Height: 0.42 m

### Technical specifications:

Maximum load:	15 kg
Material thickness:	7 mm
Front panel width:	27"
Mounting height:	Approx. 31 cm (7 U)
Mounting depth:	315 mm
Weight:	8,70 kg

Strength:	7 mm
Outside dimensions (W x D x H):	780 x 390 x 245 mm
Inside dimensions:	
Mounting width:	720 mm, 27"
Mounting height:	315 mm
Mounting depth:	190 mm
Outer dimensions/corners:	55 mm