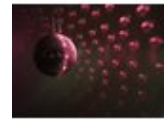
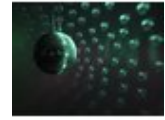


EUROLITE Mirror Ball Set 30cm with Pinspot

Set with motor, mirror ball, chain, and pinspot

Art. No.: 50101860

GTIN: 4026397374834



List price: 117.81 €

incl. 19% VAT.

Description:

Amazing disco atmosphere and easy operation - this set makes it possible!
This set in professional quality offers you a proven Eurolite classic at an unbeatable price.
No matter if you use it to illuminate your living room, a clubhouse or a bar, this party set always guarantees the true disco feel!

The set includes a mirror ball with a diameter of 30 cm covered with countless little mirrors.
Thanks to the supplied motor, type MD-1015, the ball slowly rotates on its own axis while reflecting colorful light beams to create the familiar disco effect. The necessary light is provided by an Eurolite T-36 pinspot which, of course, is also included in this set. To add some color, we also include a motorized color wheel mixing the colors red, yellow, green and blue. Alternatively, you can create a nice split effect by simply switching off the motor.

Features:

- Mirror ball with a stable plastic core
- High stability due to integrated axle
- Exact alignment
- Additional safety eyelet for safety chain
- Narrow beam angle, at a distance of 4 m there is a projected circle of light with a diameter of 30 cm
- Color caps or color foils can be attached in front of the lens
- For illuminating e.g. mirror balls, entrance or counter areas or as basic illumination
- Low power consumption
- Diverse beam angles are possible when using alternative illuminants
- Easy fixing at the tube rim of the spotlight
- For application areas such as: Clubs/dancing school; Party room; Installation; restaurants, bars and hotels

Logistic

EAN / GTIN: 4026397374834

Weight: 4,50 kg

Length: 0.33 m

Width: 0.33 m

Height: 0.46 m

- Very quiet working noise
- Application possibility: Suspended
- color wheel**
- Color wheel with red, green, yellow, blue
- illuminant**
- Dimmable
- Very high color rendering index (CRI)
- spotlight**
- With Mounting bracket
- Package contents**
- 1 x mirror Ball, 1 x spotlight, 1 x motor, 1 x illuminant, 1 x color wheel, 1 x motor for color wheel, 2 x chain, 4 x chain link, 1 x lamp clamping ring, 2 x nut, 3 x screw, 1 x user manual

Technical specifications:

Weight:	3,45 kg
Noise classification:	Class 1 (very slight noise, suitable for noise-sensitive environments)
Color wheel	
Color generation:	Color wheel with red, green, yellow, blue
Material:	Plastic, 2 mm
Dimensions:	Diameter: Ø 23 cm
Illuminant	
Voltage (lamps):	6,4 V
Nominal wattage:	30 W
Base:	G-53 STC
Lamp type:	Halogen lamp; clear lamp
Lamp specification:	Dimmable
Beam angle:	6°
Color temperature:	3000K
Color rendering index (CRI):	99 Ra
Construction:	PAR-36
Mounting bracket	
Diameter mounting holes:	3 x Ø10mm; 1 x Ø8mm
Material:	Metal, 2 mm
Spotlight	
Power supply:	230 V AC, 50 Hz
Power consumption:	Max. 30 W
IP classification:	IP20
Protection class:	Protection class I
Suitable lamp:	6 V/30 W PAR-36
Power connection:	Fixed power supply cord with safety plug
Cable construction:	3 x 0,75 mm ² H05VV-F
Cable length:	Approx. 0,9 m
Housing color:	Black
Attachment system:	Mounting bracket
Material:	Metal
Motor	

Power supply:	100-240 V AC, 50/60 Hz
Power consumption:	4 W
IP classification:	IP20
Protection class:	Protection class I
Cable construction:	3 x 0,75 mm ² H05VV-F
Cable length:	Approx. 0,9 m
Speed:	1,5 RPM
Maximum load:	4 kg
Material:	Metal
Dimensions:	Height: 8,50 cm Diameter: Ø 11,20 cm
Mirror Ball	
Mirror Dimensions:	1 cm x 1 cm
Dimensions:	Diameter: Ø 30 cm
Motor for color wheel	
Power supply:	100-240 V AC, 50/60 Hz
Power consumption:	4 W
IP classification:	IP20
Protection class:	Protection class I
Cable construction:	3 x 0,75 mm ² H05VV-F
Cable length:	Approx. 0,9 m
Speed:	3 RPM
Maximum load:	1 kg
Housing color:	Black
Material:	Plastic
Chain	
Material:	Metal
Color:	Black
Dimensions:	Length: 33 cm
Lamp clamping ring	
Material:	Metal
Color:	Silver
Legal specifications	
Special product:	Not designed for household room illumination
Intended use:	Show effect lighting