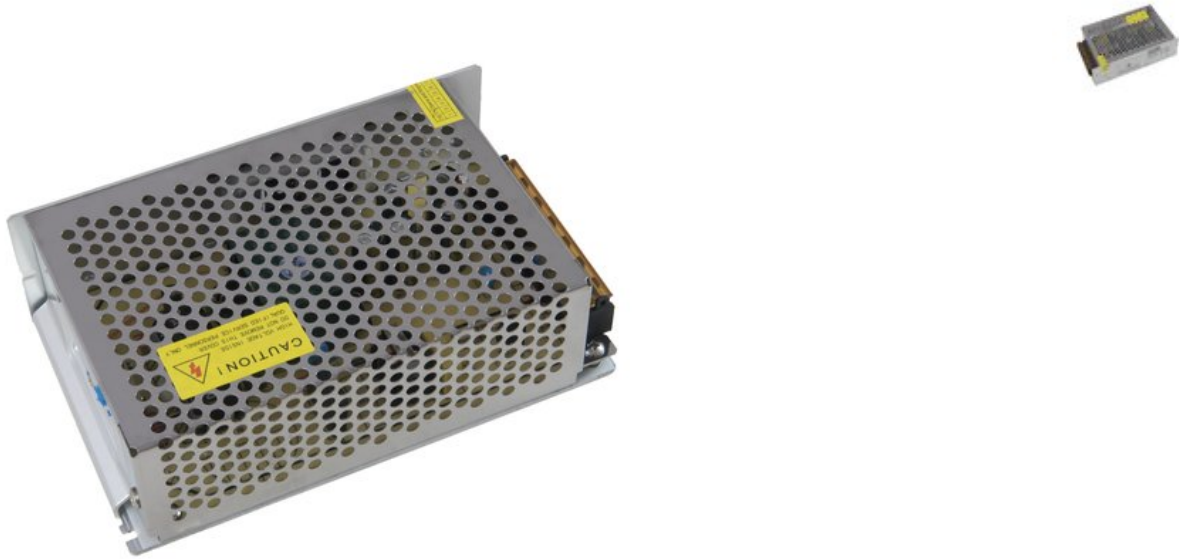


EUROLITE Electr. LED Transformer, 5V, 20A

Stabilized LED power supply unit DC 5 V, 20 A

Art. No.: 51402237

GTIN: 4026397632033



The article is no longer in our assortment.

Features:

- Especially for LED installations
- Indoor use only
- Input voltage AC 100-240 V
- Output voltage DC 5 V, 20 A
- Protected against short circuit, overload, overheating and overvoltage
- Noise filter
- Connection via bare cable ends
- L x W x H: 160 x 100 x 50 mm
- 370 g

Package contents

- 1 x external mains adapter

Logistic

EAN / GTIN: 4026397632033

Weight: 0,40 kg

Length: 0.17 m

Width: 0.11 m

Height: 0.06 m

Technical specifications:

Power connection:	Mains input via screw terminal
Power output:	2 x screw terminal
Dimensions:	Width: 10 cm Depth: 16 cm Height: 5 cm
Weight:	370 g