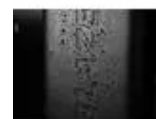


## LASERWORLD tarm BLAZE Moving Head

Weather-proof moving head with white light laser

Art. No.: 51743310

GTIN: 7640144990886



**List price: 5591.81 €**

incl. 19% VAT.

### Features:

- Positioning within 540° PAN, 270° TILT
- Exact positioning (16 bit resolution)
- Prism 6-fold linear rotating; prism 16-fold rotating; frost filter rotating; color wheel; gobo wheel with rotating gobos; gobo wheel with static gobos; focus motor-driven
- Pulse-width modulation; Dimmer electronic
- Beam effect; spot effect
- CMY color mixing for indefinite color variations
- Color wheel with 19 dichroic filters plus open and CTO correction filter<BR>rainbow effect with adjustable speed in both directions
- Gobo wheel with static gobos, 19 gobos and open<BR>shake effect
- Gobo wheel with rotating gobos, 6 glass gobos an open<BR>shake effect
- Laser class 1 <BR> does not require additional protective measures or appointment of a laser safety officer
- Control via CRMX by LumenRadio; sACN; RDM; Art-Net; DMX
- DMX fail mode (hold; blackout)
- Suitable for outdoor use IP66

#### Package contents

- 1 x device, 1 x user manual, 1 x power cord, 2 x omega bracket

### Logistic

EAN / GTIN: 7640144990886

Weight: 48,00 kg

Length: 0.84 m

Width: 0.52 m

Heigh: 0.48 m

Bulky product

### Technical specifications:

Power supply: 100-240 V AC, 50/60 Hz

Power consumption: 240 W

IP classification: IP66

Protection class:	Protection class I
Power connection:	Mains input via IP T-Con (M) mounting version power supply cord with safety plug
Power output:	1 x IP T-Con (F) mounting version
Max. TILT movement:	270° exact positioning (16 bit resolution)
Max. PAN movement:	540° exact positioning (16 bit resolution)
Equipment:	Prism 6-fold linear rotating; prism 16-fold rotating; frost filter rotating; color wheel; gobo wheel with rotating gobos; gobo wheel with static gobos; focus motor-driven
Color generation:	CMY color mixing for indefinite color variations
Color generation:	Color wheel with 19 dichroic filters plus open and CTO correction filter  Rainbow effect with adjustable speed in both directions
Gobos:	Gobo wheel with static gobos, 19 gobos and open Shake effect Gobo wheel with rotating gobos, 6 glass gobos an open Shake effect
Laser class:	1
DMX channels:	19; 23; 27
DMX input:	1 x 5-pin XLR (M) mounting version IP
DMX output:	1 x 3-pin XLR (F) mounting version IP
Control:	CRMX by LumenRadio; sACN; RDM; Art-Net; DMX
DMX fail mode:	Hold; blackout
Housing color:	Black
USB port:	1 x type C
Dimensions:	Length: 38,1 cm Width: 28,0 cm Height: 66,5 cm
Weight:	24,00 kg