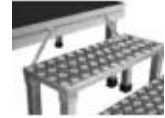


GUIL ECD-20-40 Staircase System

Art. No.: 80702867

GTIN: 4026397676525



Features:

- Made in Europe

Technical specifications:

Stairs:	Number: 2 Pcs. Tread width: 80 cm Tread depth: 30 cm Tread height: 20 cm
---------	---

Dimensions:	Height: 40 cm
-------------	---------------

Weight:	13.00 kg
---------	----------

Logistic

EAN / GTIN: 4026397676525

Weight: 13,00 kg

Length: 0.88 m

Width: 0.10 m

Height: 0.10 m

Scope of delivery:

1 x connection set