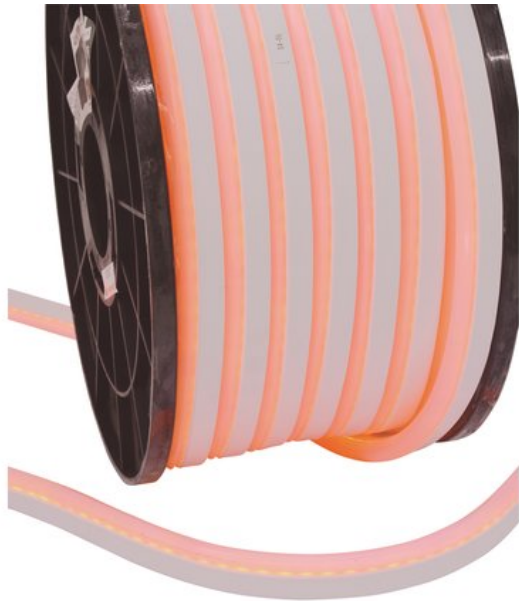


EUROLITE LED Neon Flex 230V orange 152cm

Phenomenal: neon LEDs!

Réf. : 50502930

GTIN: 4026397238488



L'article n'est plus disponible.

Description:

Neonlight of the new generation!

They are very well known: advertising signs or logos with neon light. Now, this great eye-catcher can finally be realized with LEDs. And in comparison with the traditional neon lights, there are only advantages. Besides the familiar merits of the LED-technique, such as the low power consumption and the extremely long life, the neon ribbons can also convince with their reliability and impassivity. There will be no more logos, where single letters, or parts of it, do not work. Annoying flickering will never occur again. Transport damages and problems with the installation are also history now. These ribbons can be bent in any radius as small as 4 cm and single pieces can be combined as you wish. It is a must-have for everyone who wants to work with neon effects like this.

Caractéristiques:

- Flexible tube with neon LEDs for decorative lighting
- LED Neon Flex creates the effect of conventional neon light, but has many more benefits and does away with the technical weaknesses: no complicated installation, no fragile glass nature, no potential shock hazard, no high maintenance costs and no high power consumption
- Splash-proof tube (IP44) for outdoor applications, e.g. architectural borders on high-rise buildings, casinos, pathway lighting, amusement park rides, cove lighting, signage, etc.
- Built of optimally protected LEDs in a flexible full-plastic round tube, can be bent in any radius as small as 4 cm
- Energy-efficient LED technology for long life and low operating costs
- Can be cut on the marks into 152 cm segments
- Available as complete 50 m reel (equals 33 segments) or as a multiple of 152 cm
- In your order please declare the desired length
- Price per segment (91 cm)

Logistique

EAN / GTIN: 4026397238488

Poids: 0,74 kg

Longueur: 1.53 m

Largeur: 0.02 m

Hauteur: 0.03 m

Article encombrant

- Can be custom cut and shaped on-site
- Individual segments can be combined with each other via connectors
- Power cable and various connectors with shrink sleeves as well as end cap, and aluminum channels for fixation optional
- 230 V operation without transformer
- Available in different colors and color temperatures

Données techniques:

Alimentation électrique:	230 V AC, 50 Hz
Poids:	740 g
Power consumption/meter:	4 W/m
Cutting unit:	152 cm
LEDs/unit:	120
Lamp-distance:	approx. 1.27 cm
Tube-diameter:	15 mm
Max. length:	90 m
Spécifications juridiques	
Produit spécial:	Non destiné à l'éclairage de la pièce dans les ménages
Utilisation:	Éclairage pour effets de spectacle