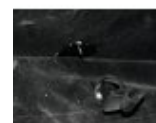
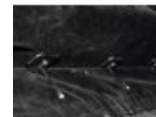
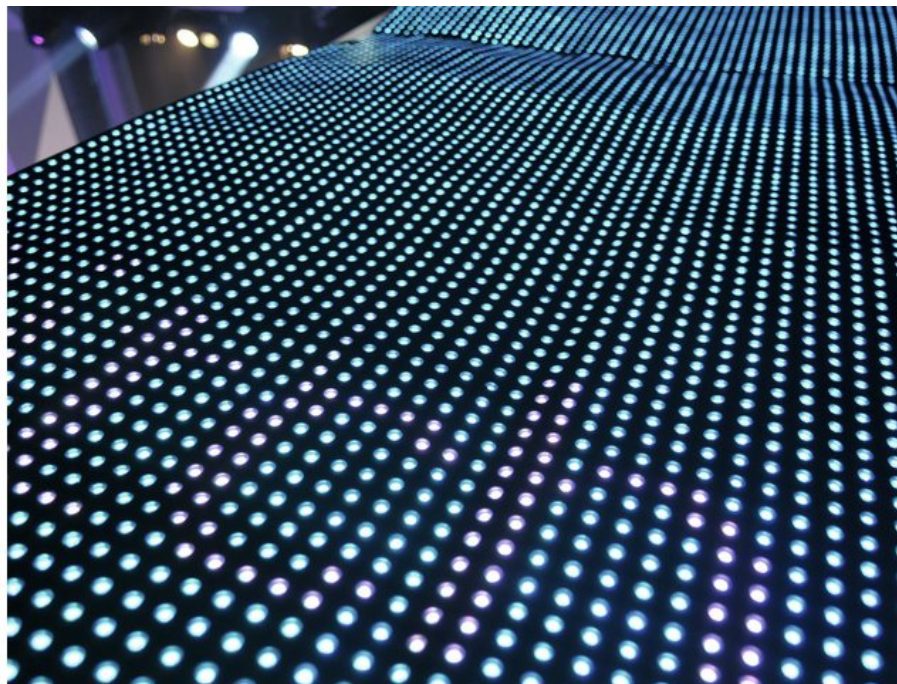


## EUROLITE LSD-18.25 MK2 custom / per m<sup>2</sup>

Custom sizes for LED soft displays of the LSD series

Réf. : 80503223

GTIN: 4026397453225



**L'article n'est plus disponible.**

### Caractéristiques:

- Fully assembled LED soft displays produced according to your individual dimensions - contact our sales team!
- Production of model LSD-25 available in steps of 0.40 meters (equals 16 pixels)
- Maximum size 1280 x 1024 pixels
- For quick 2-man installation and uncomplicated transport, a size of up to 5 meters per display is recommended
- Price per square meter
- Available in black and white
- Regular delivery time by sea freight: about 9 weeks
- Short-term delivery by air freight: about 4 weeks

### Logistique

EAN / GTIN: 4026397453225

Poids: 18,00 kg

Longueur: 0.00 m

Largeur: 0.00 m

Hauteur: 0.00 m

### Données techniques:

Alimentation électrique: 100-240 V CA, 50/60 Hz

Puissance totale de raccordement: 100,00 W

Type de protection: IP44

Dimension: Largeur : 1,28 m  
Hauteur : 2,56 m

Poids: 18,00 kg

Resolution (W x H): 64 x 64 pixels

Pixel pitch: 18.25 mm

Pixel density:	3002/m <sup>2</sup>
Pixel configuration:	tri-color RGB LEDs, type SMD 5050
Lifetime:	approx. 100000 hours
Display port:	DVI/RJ45
Display mode:	synchronous to video source
Drive mode:	static
Screen resolution:	rec. 1024 x 768, max. 1280 x 1024
Brightness:	3680 cd/m <sup>2</sup> (nits)
Viewing angle:	120°
Frame rate:	60 Hz
Data refresh rate:	600 Hz
Colors:	16.7 million (R 256, G 256, B 256)
Protection grade:	IP44
Operating temperature:	-10 to 45 °C
Humidity:	10 to 90 %
Dimensions (W x H):	1170 x 1170 mm
Spécifications juridiques	
Produit spécial:	Non destiné à l'éclairage de la pièce dans les ménages
Utilisation:	Éclairage pour effets de spectacle