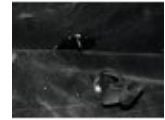
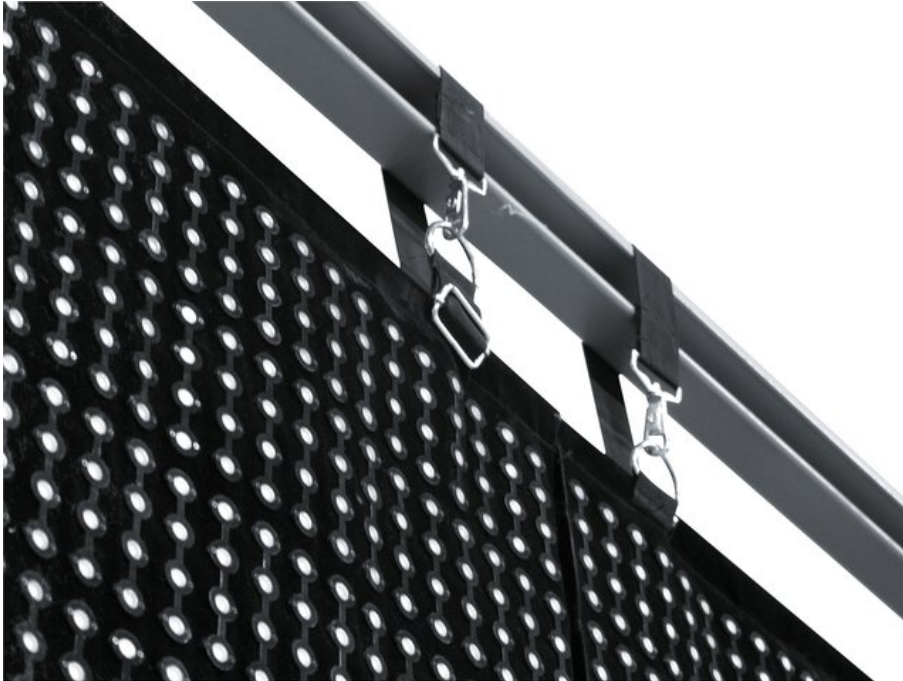


EUROLITE LSD-25E IP44 (H)1.6m x (W)1.2m

LED soft displays (economy version)

Réf. : 80503238

GTIN: 4026397428735



L'article n'est plus disponible.

Caractéristiques:

- Inexpensive economy version of the successful LED soft displays
- Flexible displays with tri-color RGB LEDs (type SMD 3528) for bright and colorful projection of videos and graphics
- Modular display concept allows the build-up of large areas, ideal for outdoor use with large viewing distances
- Bendable and foldable PVC material suitable for various shapes, e.g. columns, circles, angles
- Fast and uncomplicated installation, indoor and outdoor (IP44)
- Truss suspension via built-in belts
- Water-repellent and flame-resistant
- Low weight and small volume for convenient transport
- Easy maintenance - LEDs can be replaced without difficulty
- Controllable via optional network components and PC software
- All-in-one control system T9 (80503300): network interface and software LED Show T9 - ideal system for mobile use with notebooks with 1-gigabit NIC
- Control system LED studio: receiver interface (80503310), PCI sending card and software LED Studio (80503130)
- Recommended media software: MADRIX
- Switch-mode power supply for operation between 100 and 240 Volts
- Power output for passing on the power supply
- Available in different sizes and pixel pitches
- Custom sizes available upon request (in 0.4 m units)

Logistique

EAN / GTIN: 4026397428735

Poids: 15,35 kg

Longueur: 1.21 m

Largeur: 0.61 m

Hauteur: 0.22 m

Article encombrant

Données techniques:

Alimentation électrique:	100-240 V CA, 50/60 Hz
Puissance totale de raccordement:	40,00 W
Type de protection:	IP44
Dimension:	Largeur : 1,2 m Hauteur : 1,6 m
Poids:	13,30 kg
Resolution (W x H):	48 x 64 pixels
Pixel pitch:	25 mm
Pixel density:	1600/m ²
Pixel configuration:	tri-color RGB LEDs, type SMD 3528
Lifetime:	approx. 100000 hours
Display port:	DVI/RJ45
Display mode:	synchronous to video source
Drive mode:	1/8 scan
Screen resolution:	max. 1280 x 1024 (LED Studio) max. 1024 x 896 (LED Show T9)
Brightness:	585 cd/m ² (nits)
Viewing angle:	120°
Frame rate:	60 Hz
Data refresh rate:	600 Hz
Colors:	16.7 million (R 256, G 256, B 256)
Protection grade:	IP44
Operating temperature:	-10 to 45 °C
Humidity:	10 to 90 %
Dimensions (W x H):	1200 x 1600 mm
Spécifications juridiques	
Produit spécial:	Non destiné à l'éclairage de la pièce dans les ménages
Utilisation:	Éclairage pour effets de spectacle