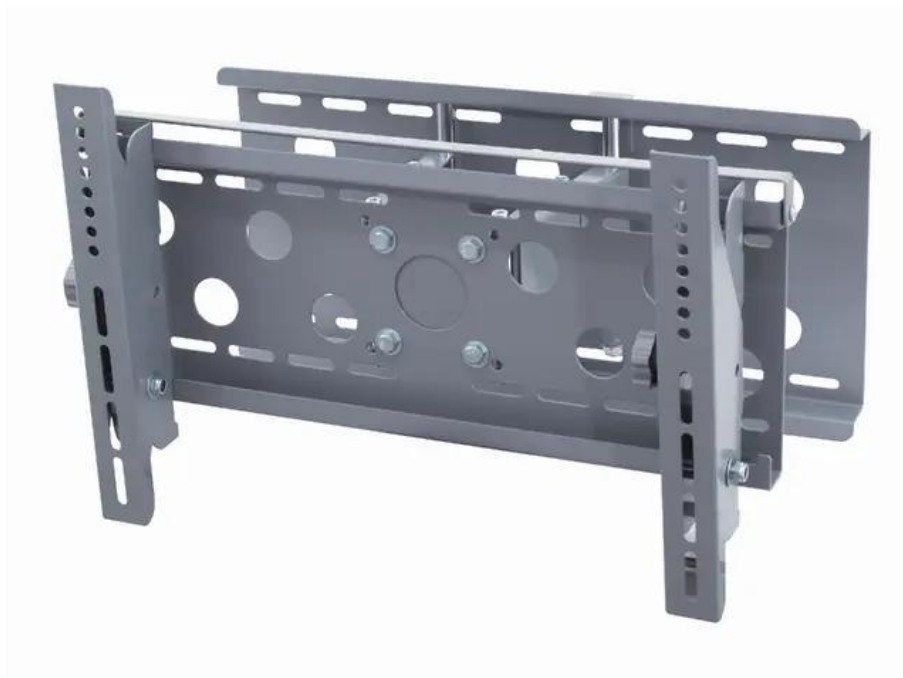


## EUROLITE Support mural pour écran LCHP-23/37M

Support mural

Réf. : 81012425

GTIN: 4026397295504



### Description:

Hold on tight!

Concerning televisions, it is the last thing: LCD-devices. No surprise, when you think of the pin sharp, flicker- and contortion-free picture, that sets itself apart from conventional screens. The small installation depth is definitely another advantage. Due to their extremely flat form, the screens - similar to pictures - can be hung up to walls. But without the appropriate holder it will not work. So let us take a look at our LCHP-Mount, that will help you to place your TV securely and exactly there where you want it to be. Our device is dimensioned for different screens, it can carry 75 kilograms and features another useful detail: the construction is not only able to adjust the inclination, but also to change the distance to the wall by simply pulling it out. Now you are even more flexible and really can enjoy the new technology.

### Logistique

EAN / GTIN: 4026397295504

Poids: 11,10 kg

Longueur: 0.56 m

Largeur: 0.29 m

Hauteur: 0.12 m

### Caractéristiques:

- Wall mount for LCD monitors with a diagonal screen size of 585 mm (23") to 940 mm (37")
- Adjustable tilting angle
- Extendable
- Solid metal version
- VESA standard

### Données techniques:

Charge maximale BGV C1 (8 fois):	30 kg
Distance par rapport au mur:	95 mm
Interface VESA max.:	48 cm x 34,8 cm

Dimension: Largeur : 52,8 cm  
Profondeur : 9,5 cm  
Hauteur : 34,8 cm

---

Poids: 10 kg

---

**Contenu de la livraison:**

---